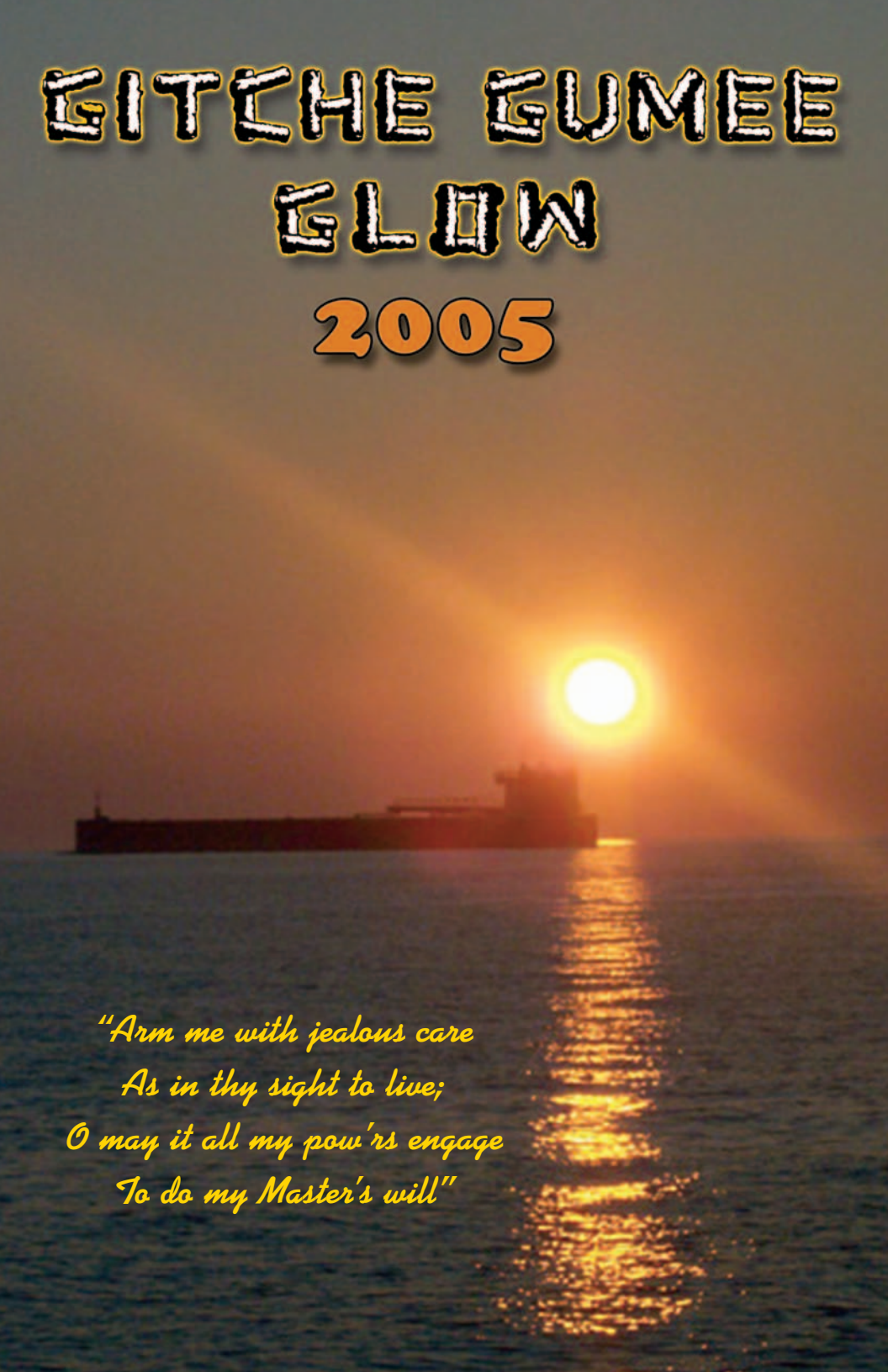


GITCHE GUMEE GLOW 2005



*"Arm me with jealous care
As in thy sight to live;
O may it all my pow'rs engage
To do my Master's will"*

INTRODUCTION

This year we have spent a lot of time looking back at the past seventy five years of Gitche Gumee and it has been fun. It was great to reminisce and enjoy talking about friendships made and to hear the phrase: “do you remember

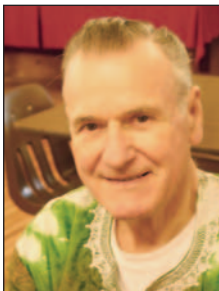


Charles Hocking and Martin Strolle

when we...” But it was most encouraging to hear of spiritual decisions made and see how lives were changed for the better because of those decisions. I think of Charlie Hocking and Martin Strolle talking about the decision they made at Gitche Gumee back at the first youth camp in 1934. It was there they made the decision to give their lives over to the Lord. They both served the Lord for over forty years as a Missionary and Pastor. Today you can see how happy they are knowing that they have made their life count for eternity. A story like theirs could be told many times over and it is exciting to think that it is still happening today.

Our youth camps were up in attendance along with the family camps. The Senior Saints camps were down some but look good for next year. All the pre-registrations for 2006 look very encouraging. It is hard to evaluate spiritual decisions made but I do know that during the youth camps over twelve campers trusted Christ as Savior and many more made decisions to give their life to Christ.

We just received word that our Junior Camp Bible speaker from this past summer, Ken Weddle has gone home to be with the Lord. Also Gene Thomas, our Missionary speaker, has terminal cancer and is in Hospice Care. They both were in



Gene Thomas

such good health this summer and did a great job in challenging our campers. It really

points out the brevity of life and that we need to “Lay up treasures in Heaven.” Both of these men have certainly done that. We would ask you to pray for their families as they go through this very difficult time.



Ken & Linde Weddle

OUR HEART FELT THANKS

On July 10th we had a special service to rededicate Gitche Gumee Bible Camp to the Lord for His service. The Tabernacle, where it all began seventy five years ago, was filled and we were all treated to reminiscence from the past. We even had one person who was there for the first service in 1930, the director's daughter, Joyce Hart (she was very young)! It was a service of praise and thanksgiving to God for what He has done.

At the end of the service Carol was asked to come up and join me and we



Mel, Carol & Jessica

were presented with a plaque commemorating our twenty five years of service. We also were presented with a card which contained a check for over \$11,000.00. As you could imagine we were in a state of shock. Unknown to us the camp board had sent out a request for those who would like to give us a gift. We have been told that over 300 people responded. Carol and I just want to say a big thank you to all of you. I can't tell you how encouraging this has been to us. Thank you so very much!!

GITCHE GUMEE GOES PLASTIC

You will now be able to use your credit card to pay for camp fees and other purchases or make contributions. We realize that most people like to use the card rather than carry a lot of cash or write a check. It is our hope that this will make it easier for everyone. The two cards that we will be using are Visa and MasterCard.

REGISTRATION CHANGES

Starting with reservations for the 2007 season, Family Camp and Senior Saints guests must register by completing a registration form and paying a non-refundable deposit. For your convenience, there are a few ways this can be done.

COMPLETE REGISTRATION FORM PAY NON-REFUNDABLE DEPOSIT

Send form through US Postal service

Send a check through US Postal service.

Call the camp office and give form information to GGBC personnel.

Call the camp office with credit card information.

Fill out the form online at:
www.gitche.net

Pay with credit card on our secure web-site.

Reservations for the 2007 season open on May 1, 2006. A 2007 registration form is included in this mailing. Please feel free to make copies as needed.

STAFF 2006

Last year we were welcoming Susie and Eric on staff. Last spring Eric received a call from Bethany Baptist Church in Dollar Bay to become the Associate Pastor for Youth and Families. After much prayer he accepted the call. We are happy that the church would like him to continue to help out at Gitche Gumee during the three youth camps and Susie has been able to work full time at the camp in the summer and part time this winter. Although we were hoping it would work out for Eric to be full time at Gitche Gumee, we are very happy for him as God is really blessing his ministry and he is doing a great job. We are thankful to Bethany Baptist for letting us have Eric for part of the summer.

We are happy to announce that Pastor Chuck Reed and his wife Ruth will be coming on staff for the seven weeks of family camp. We are excited to have them on board to help with counseling and to be a mentor to all our other staff. You will enjoy their enthusiasm. They are camp people.

We are also happy to have Arden and Jenette Callahan come to help us for the summer season. They are retired missionaries with New Tribes Mission and served many years in Brazil. Arden's parents, C.O. and Mary, were the right hand to John Rader and Charles Hart during the 50's, 60's and 70's. Arden and Jenette will bring that same love and dedication to Gitche Gumee.

YOUTH SCHOLARSHIPS

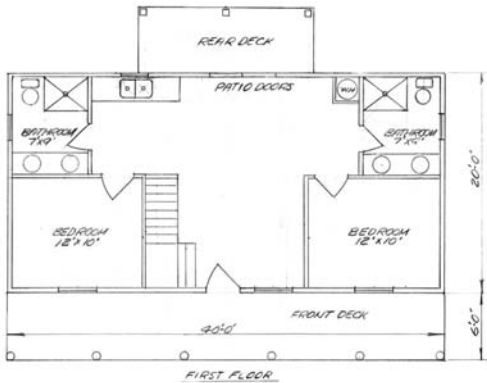
The youth camp scholarship program has allowed a lot of kids to come to camp that would not otherwise be able to come. This past summer 187 youth campers attended the three weeks of youth camp and 54 of them were on the camp scholarship. Through generous giving last year we received \$4,372.36. We have only \$350.00 left in our scholarship fund

for next year. If you would like to have a part in this program I know there will be a lot of campers that will be very grateful.

NEW MULTI-FAMILY LOFT CABIN

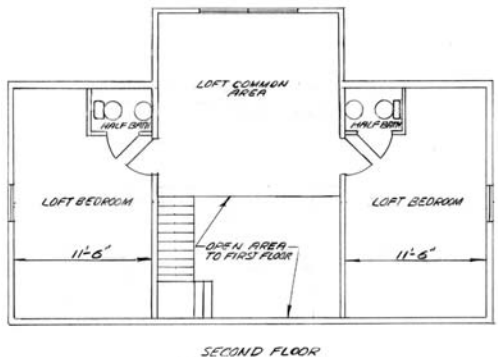
For many of our guests, Gitche Gumee is becoming a “family tradition.” Extended families have rented several cabins and have enjoyed a week together. What if we had a large enough cabin where two or three families could stay, have their private bedrooms, baths, and have a common area to play games, visit, and enjoy fellowship? We think that we have the answer. We would like to build a multi-family loft cabin that would provide these kind of accommodations. Plans are to have two bedrooms downstairs with two full baths, a common living area with a small kitchen and an area for games and visiting. The upstairs would have two large private bedrooms with two half baths. What is going to make it special is that it will have a large dormer on the back of the building which will allow for a large common area upstairs with picture windows.

The cabin is going to be built on a high bluff which should have a good view of Lake Superior. It is the last building site from a plan that was drawn up in 1990. It is only fitting that we call this cabin “The Eagles Nest.” In 1930 a large house up the hill on Garden City Road was called “The Eagles



Nest” and was used to house the first guests at Gitche Gumee. We think it will be a popular cabin.

Would you help us make this a reality? Materials for the cabin should cost around \$40,000.00. The camp is able to cover \$20,000.00 of this cost but we need to raise the remainder and we need to do this by March 31st if we are to start construction May 1st. To help us know if we will be able to build the cabin this spring we have enclosed a card and a return envelope where you can pledge an amount that you would be able to give by March 31st. Would you pray and ask God what part you might have in this



project? Workers will also be needed. Call the camp or e-mail if you are able to come. (Phone: (906) 337-0527 E-mail: campgg@pasty.com). If the project goes forward we will have three work weeks starting Monday May 1st and going through May 20th.

FROM PASTOR HART

One of the hymns in many of our hymn books reads,

*“Arm me with jealous care
As in thy sight to live;
O may it all my pow’rs engage
To do my Master’s will”*

It speaks of the responsibility we have with the Gospel. We who know the Lord have a charge to give it to others. Before the Lord took him home in 1957, John Rader, who founded Gitche Gumee and who was my beloved father-in-law said to me, “Charlie, if anything happens to me, I want you



Joyce & Charles Hart

to take over the ministry of Gitche Gumee.” I took this as a charge, not only to keep Gitche Gumee going, but to keep the message of the Gospel clear: such things as inspiration of the Scriptures, the virgin birth, the deity of Christ, the blood atonement, the need for the new birth, salvation by grace and the second coming of Christ.

Most of you have heard me speak about some institutions which started out well but today have become liberal and deny the essential truth of the Gospel.

I became the Director of Gitche Gumee and did my best, with God’s help, to keep the charge that Dad Rader had given me to keep the message clear. When I became in need of a replacement, the camp board chose Mel Jones as Director to respond to the charge given to me. Mel has done a splendid job and needs our support.

I am now 90 years old and realize that I won’t be here very long. I would like to have you encourage Mel and any other future leaders to keep the charge Dad gave to me. You can do this by prayer, by giving to support the ministry of Gitche Gumee and by attending.

—Charles Hart